



Bartels AutoEngineer® HighEnd Advantages and Features

This document contains illustrated information about significant features of **Bartels AutoEngineer HighEnd**.

Bartels AutoEngineer HighEnd Advantages and Features

Published by: Bartels System GmbH, Munich

Last printing: May 2012

The information contained within the Bartels AutoEngineer publications as well as the products and/or programs described therein are subject to change without notice and should not be construed as a commitment by Bartels System.

Although Bartels System has gone to great effort to verify the integrity of the information provided with the Bartels AutoEngineer publications, these publications could contain technical inaccuracies or typographical errors. Bartels System shall not be liable for errors contained therein or for incidental consequential damages in connection with the furnishing, performance, or use of this material. Bartels System appreciates readers' and/or users' comments in order to improve these publications and/or the products described therein. Changes are periodically made to the information therein. These changes will be incorporated in new editions of the Bartels AutoEngineer publications.

All rights reserved. No part of the Bartels AutoEngineer publications may be reproduced, stored in a retrieval system, translated, transcribed, or transmitted, in any form or by any means manual, electric, electronic, electromagnetic, mechanical, chemical, optical, or otherwise without prior express written permission from Bartels System.

Bartels AutoEngineer®, Bartels Router®, and Bartels Autorouter® are registered trademarks of Bartels System. Bartels User Language™ and Bartels Neural Router™ are trademarks of Bartels System. All other products or services mentioned in this publication are identified by the trademarks or service marks of their respective companies or organizations.

Copyright © 1986-2012 by Oliver Bartels F+E
All Rights Reserved
Printed in Germany

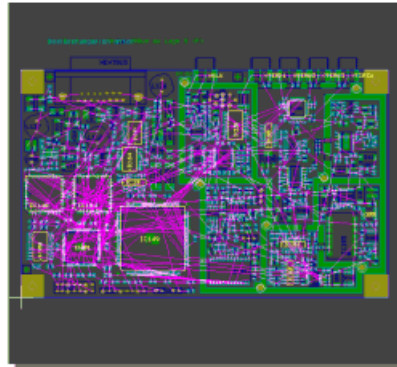
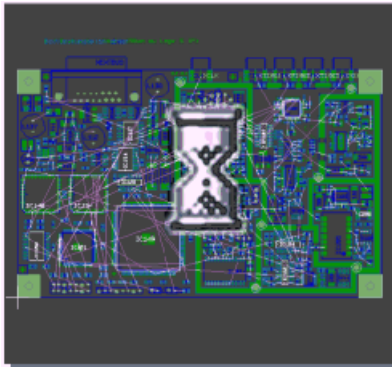
Contents

Bartels AutoEngineer® HighEnd Advantages and Features	1
Mincon Generation (Airline Calculation).....	5
Power Signal Structure Processing	5
Short-Circuit Display	5
Part Search.....	6
Simultaneous Net Highlight in Schematics and Layout (Cross-Probing).....	6
Group Selection Transfer.....	6
Physical SCM Parts Placement	6
Select Layout Placement Part Sets from SCM Symbol Groups.....	7
Layer-specific Clearance Settings for DRC and Automatic Copper Fill.....	7
CAM Processor to suppress output of unused inside layer pads.....	7
Checking high-frequency Net Shielding through minimum Ground Plane Intersection.....	7
Net Group Clearance Check.....	8
Layout Layer Stackup Definition, e.g. for Impedance Calculations	8
Dialog for Net Group DRC Assignments.....	8
Layout Group Autoplacement according to Schematics	9
Placed Symbol Indication.....	9

Mincon Generation (Airline Calculation)

delay in BAE Professional

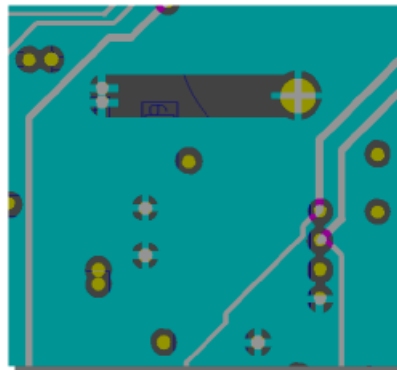
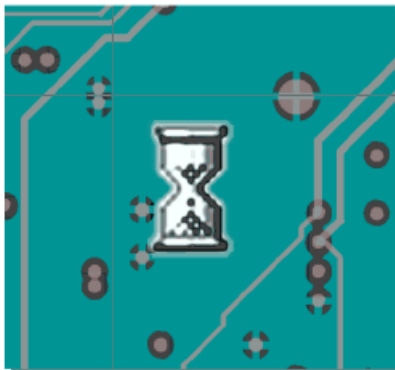
instant response in BAE HighEnd



Power Signal Structure Processing

deleting power signal area
in BAE Professional

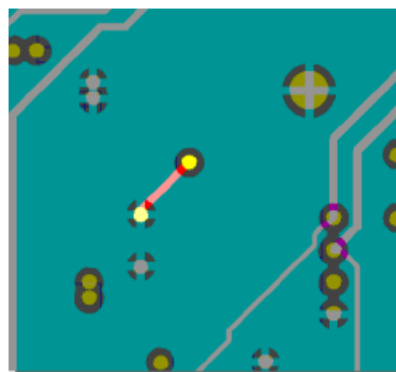
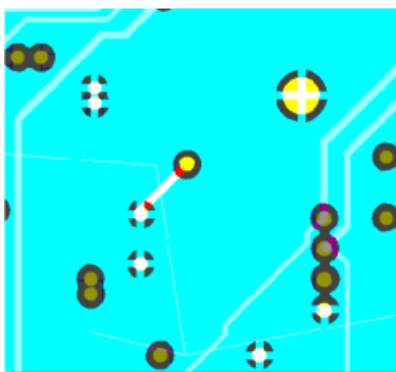
deleting power signal area
in BAE HighEnd



Short-Circuit Display

highlighting all short-circuit net elements
in BAE Professional

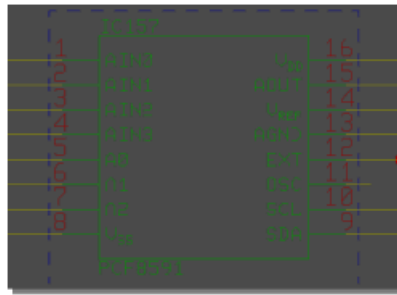
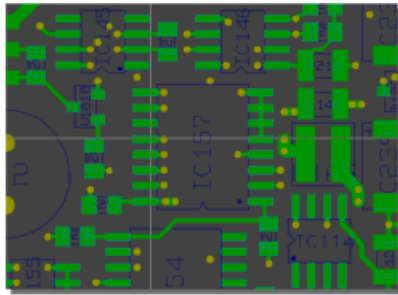
selective short-circuit highlight
in BAE HighEnd



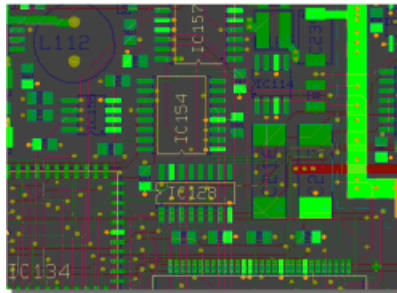
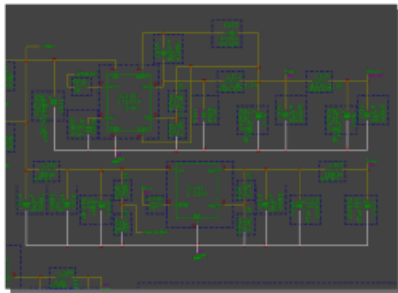
Part Search

layout part selection...

...and automatic zoom to SCM symbol



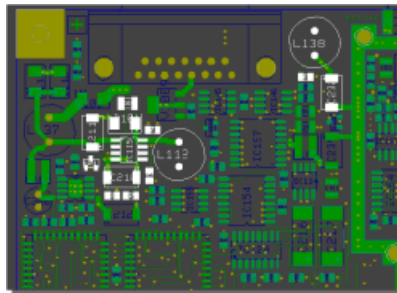
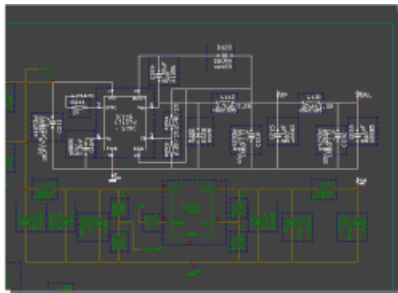
Simultaneous Net Highlight in Schematics and Layout (Cross-Probing)



Group Selection Transfer

SCM symbol group selection...

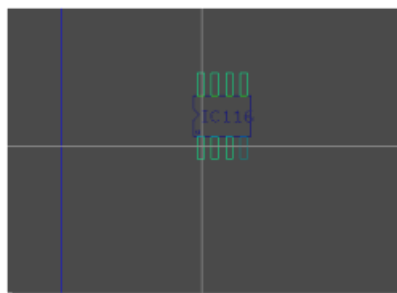
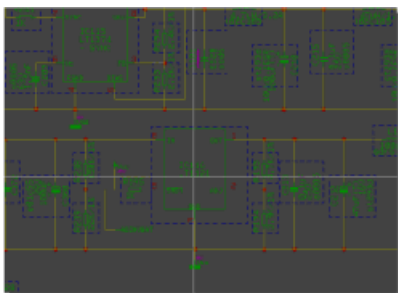
...to select corresponding layout parts



Physical SCM Parts Placement

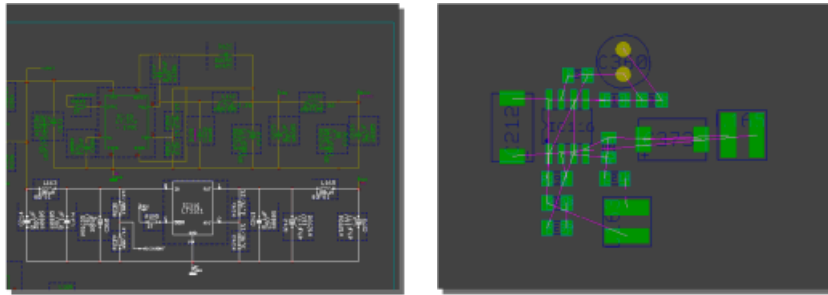
select SCM symbol...

...and place corresponding layout part

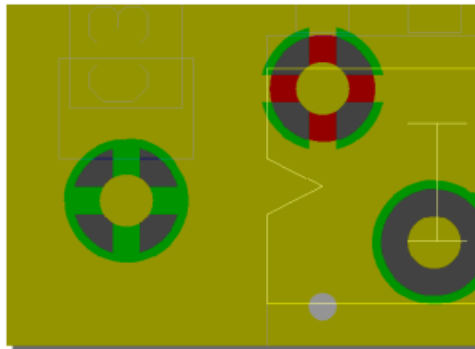


Select Layout Placement Part Sets from SCM Symbol Groups

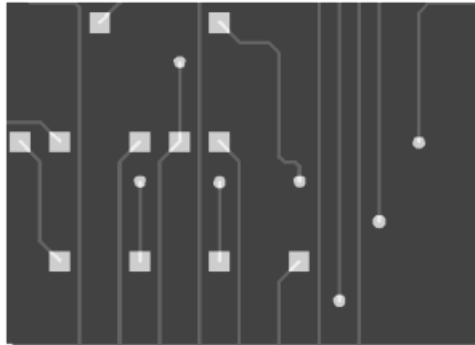
group-select SCM symbols and... ..autoplace corresponding layout part set



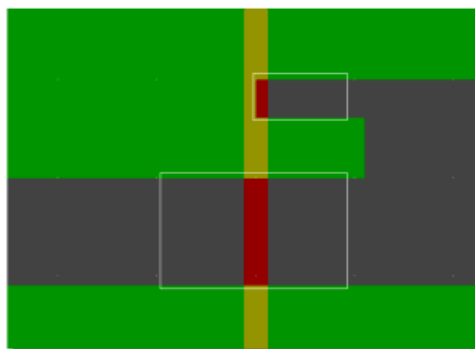
Layer-specific Clearance Settings for DRC and Automatic Copper Fill



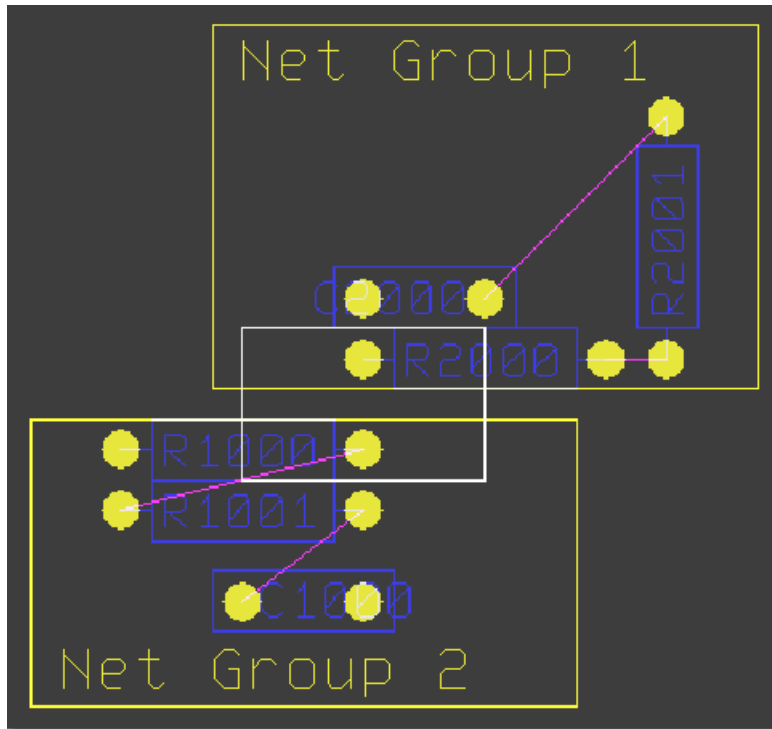
CAM Processor to suppress output of unused inside layer pads



Checking high-frequency Net Shielding through minimum Ground Plane Intersection



Net Group Clearance Check



Layout Layer Stackup Definition, e.g. for Impedance Calculations

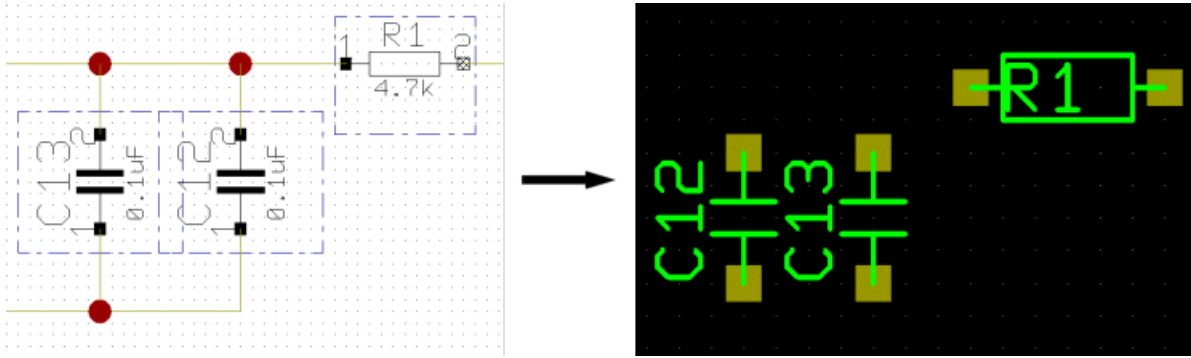
	Epsilon r	tan delta	Metal (um)	Isolation (um)	Surface	Ground
Signal Layer 1	4.5	0.02	70.0	300.0	Cu	<input type="checkbox"/>
Signal Layer 2	4.5	0.02	70.0	300.0	Cu	<input type="checkbox"/>
Signal Layer 3	4.5	0.02	70.0	300.0	Cu	<input type="checkbox"/>
Power Layer 1	4.5	0.02	70.0	300.0	Cu	<input type="checkbox"/>
Power Layer 2	4.5	0.02	70.0	300.0	Cu	<input type="checkbox"/>
Signal Layer 4			70.0		Cu	<input type="checkbox"/>

Dialog for Net Group DRC Assignments

lv std
hv : 2 1
lv : 0

OK Abort

Layout Group Autoplacement according to Schematics



Placed Symbol Indication

