



Bartels AutoEngineer®

Version 7.4

Highlights

This document contains illustrated information about some of the new features introduced with **Bartels AutoEngineer Version 7.4**.

Bartels AutoEngineer Version 7.4 Highlights

Published by: Bartels System GmbH, Erding

Last printing: October 2009

The information contained in the **Bartels AutoEngineer** publications as well as the products and/or programs described therein are subject to change without notice and should not be construed as a commitment by Bartels System.

Although Bartels System has gone to great effort to verify the integrity of the information provided with the **Bartels AutoEngineer** publications, these publications could contain technical inaccuracies or typographical errors. Bartels System shall not be liable for errors contained therein or for incidental consequential damages in connection with the furnishing, performance or use of this material. Bartels System appreciates readers' and/or users' comments in order to improve these publications and/or the products described therein. Changes are periodically made to the information therein. These changes will be incorporated in new editions of the **Bartels AutoEngineer** publications.

All rights reserved. No part of the **Bartels AutoEngineer** publications may be reproduced, stored in a retrieval system, translated, transcribed or transmitted, in any form or by any means manual, electric, electronic, electromagnetic, mechanical, chemical, optical or otherwise without prior express written permission from Bartels System.

Bartels AutoEngineer®, **Bartels Router®** and **Bartels Autorouter®** are registered trademarks of Bartels System.

Bartels User Language™ and **Bartels Neural Router™** are trademarks of Bartels System. All other products or services mentioned in this publication are identified by the trademarks or service marks of their respective companies or organizations.

Copyright © 1986-2009 by Oliver Bartels F+E

All Rights Reserved

Printed in Germany

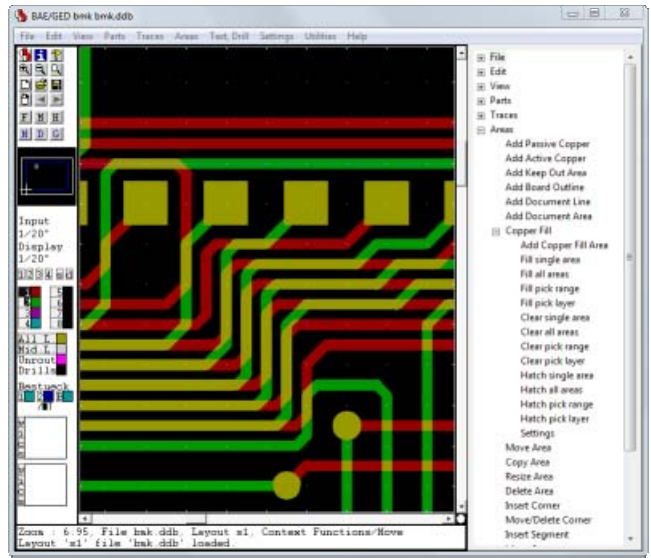
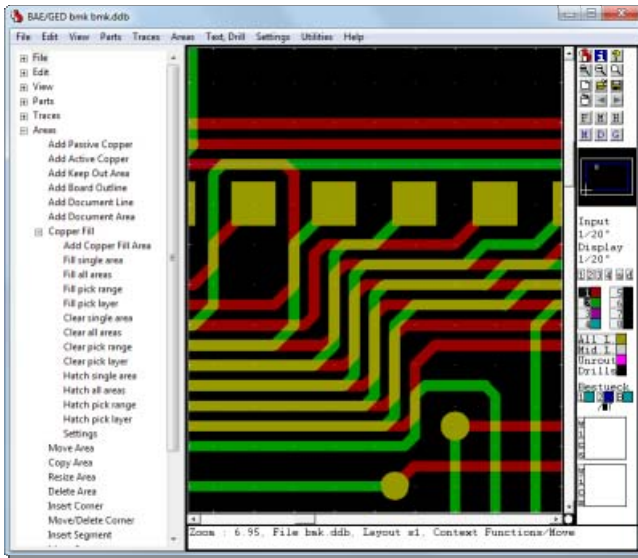
Contents

Bartels AutoEngineer® Version 7.4 Highlights	1
Treeview Menu Display Options.....	5
Toolbar Grid Display and Grid Selection.....	5
Improved Polygon Editor Interface	6
Coordinate Measuring.....	6
Symbol Browser with Logical Library Definition Display	7
Differential Pairs	8
DRC Error Distance Display	8
Postscript Output with Fixed Size Drilling Punch Hole.....	8
WRL Copper Output with transparent PCB Board	9

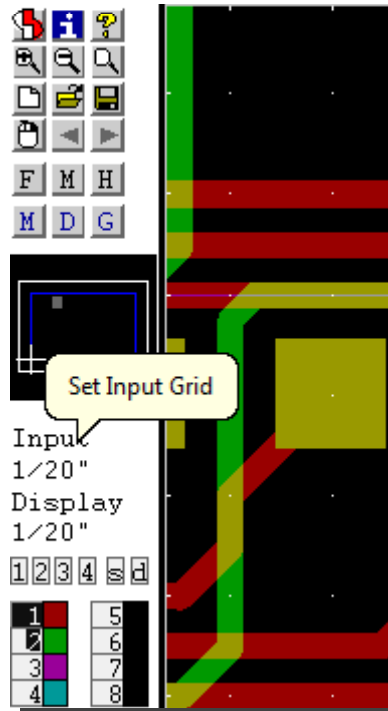
Treeview Menu Display Options

Left Treeview Menu Display

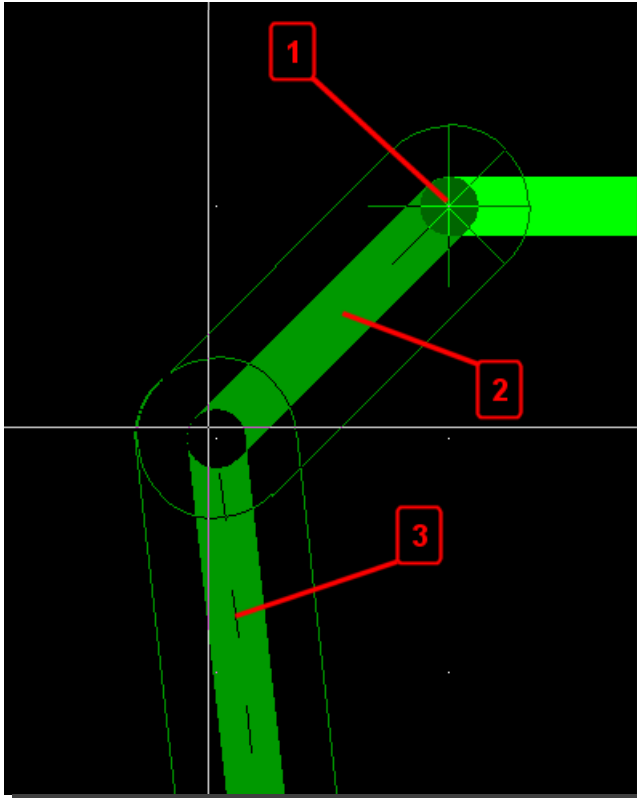
Right Treeview Menu Display



Toolbar Grid Display and Grid Selection



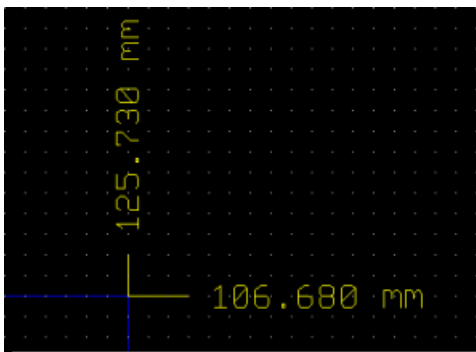
Improved Polygon Editor Interface



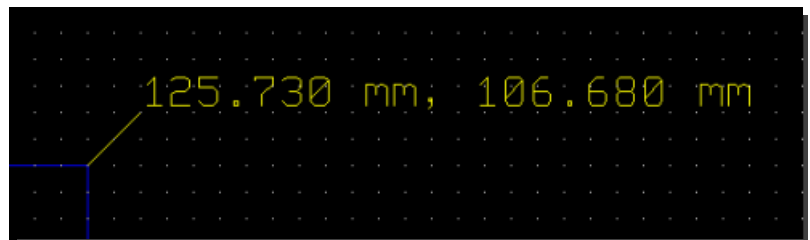
1. Angle Direction Marker
2. Solid display for segment placed by setting corner point
3. Dashed display for segment processed after corner point

Coordinate Measuring

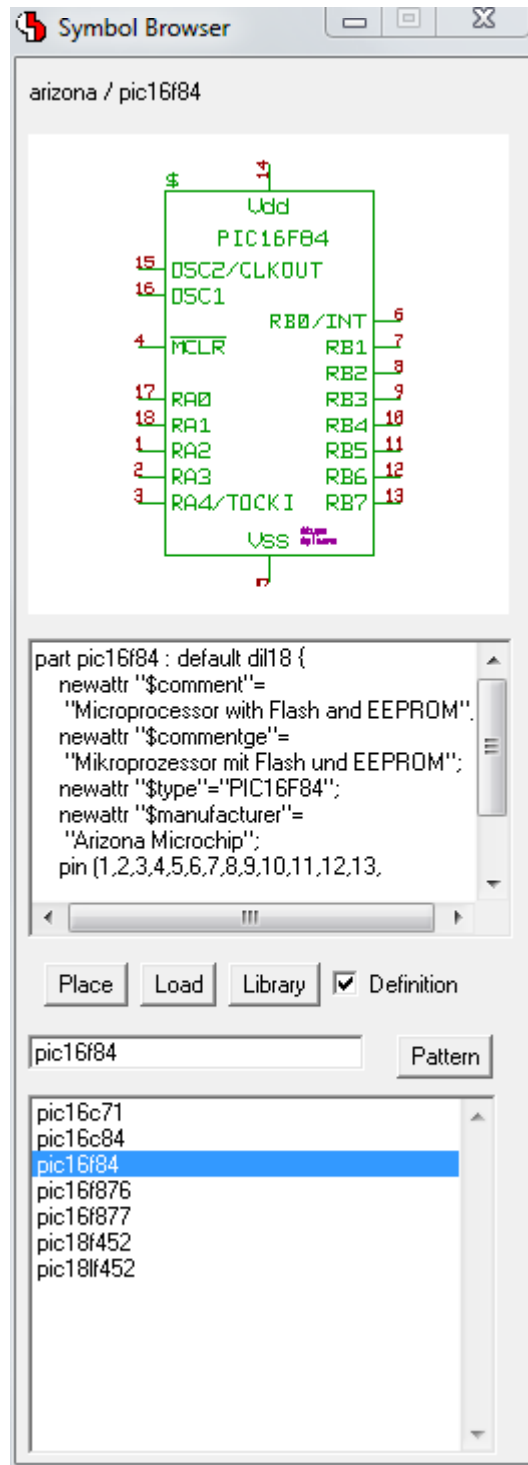
Separate X/Y Coordinates



X/Y Coordinate Pair

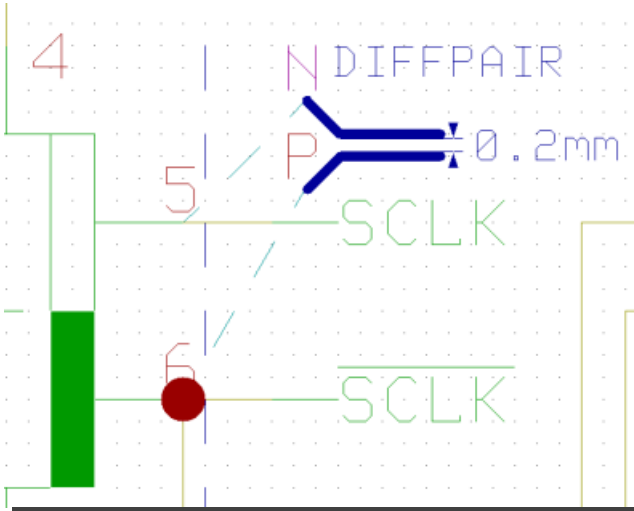


Symbol Browser with Logical Library Definition Display

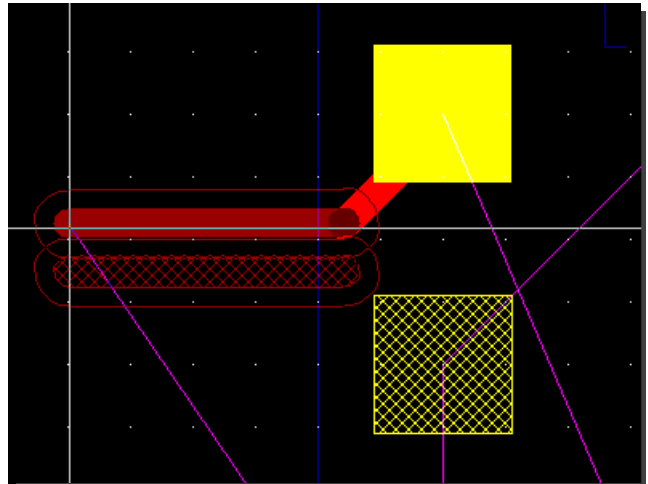


Differential Pairs

Schematic Plan Differential Pair Marker

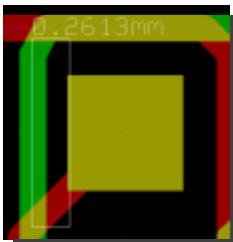


Layout Pair Partner Hatch Highlight and Parallel Trace Display



DRC Error Distance Display

DRC Error Marker with Distance Display

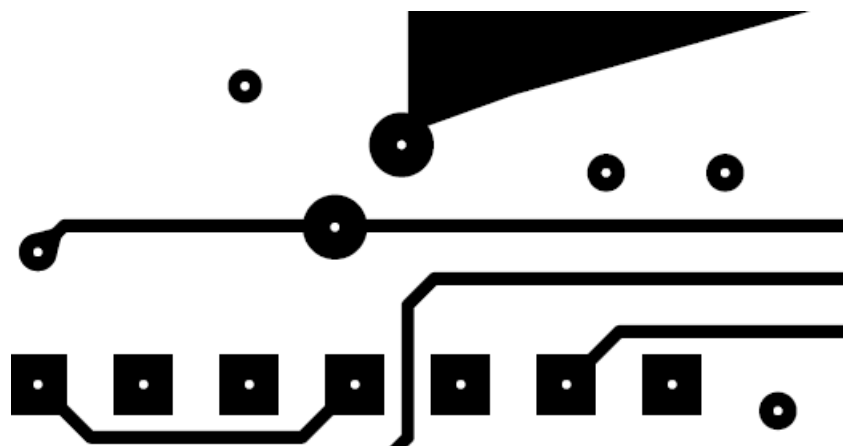


DRC Error Report with Distance Display

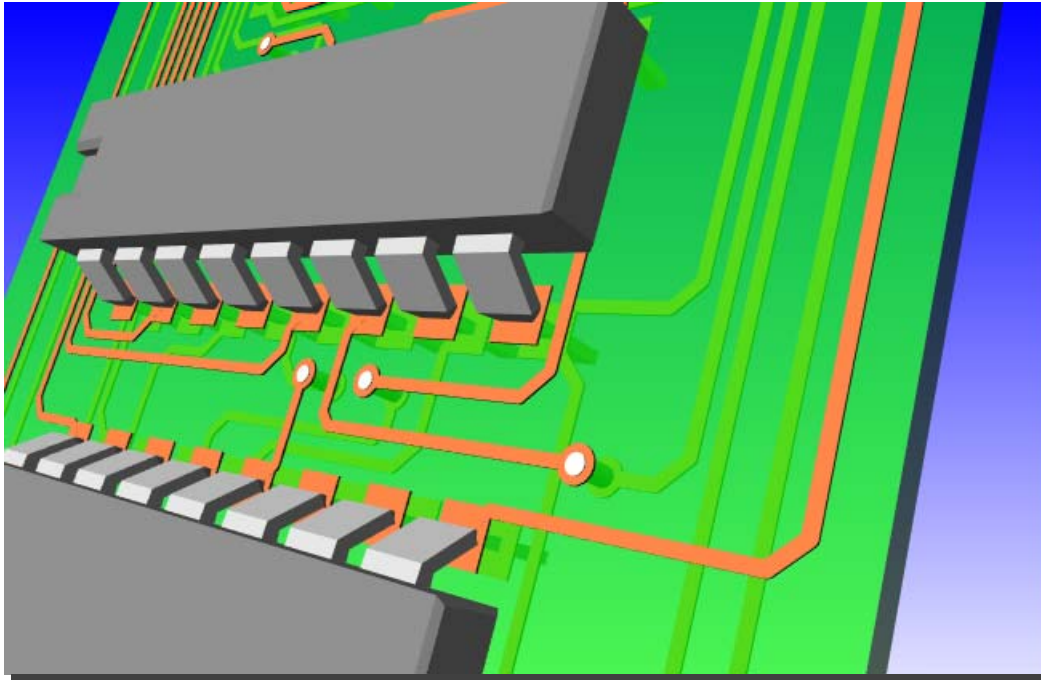
No.	Error Type	Layer	Range
1	Distance 0.261<0.28mm	Signal Layer 2 (34.4mm, 87.8mm)	(34.9mm, 90.0mm) j3 / Trace

Buttons: Dump, Update, Batch DRC, Mask out: fixed/fixe Macro level

Postscript Output with Fixed Size Drilling Punch Hole



WRL Copper Output with transparent PCB Board



Please see the **Bartels AutoEngineer® Version 7.4 Release Notes** for a detailed description of all new features introduced with Bartels AutoEngineer Version 7.4 features.